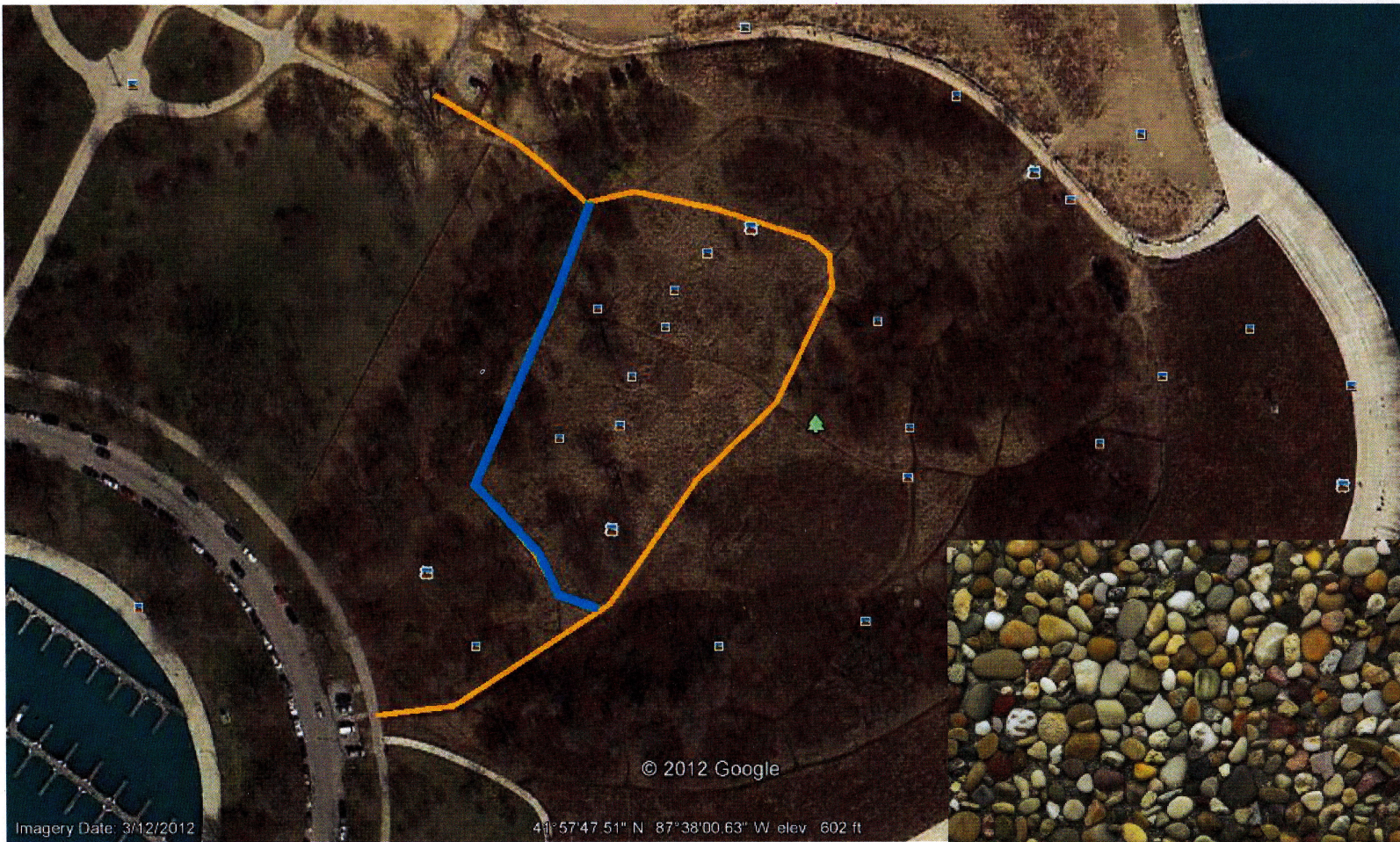


Montrose Point Improvements ADA-Accessible Concrete Path



Montrose Point Improvements Timber-Lined Perimeter Path



Montrose Point Improvements Perimeter Fencing

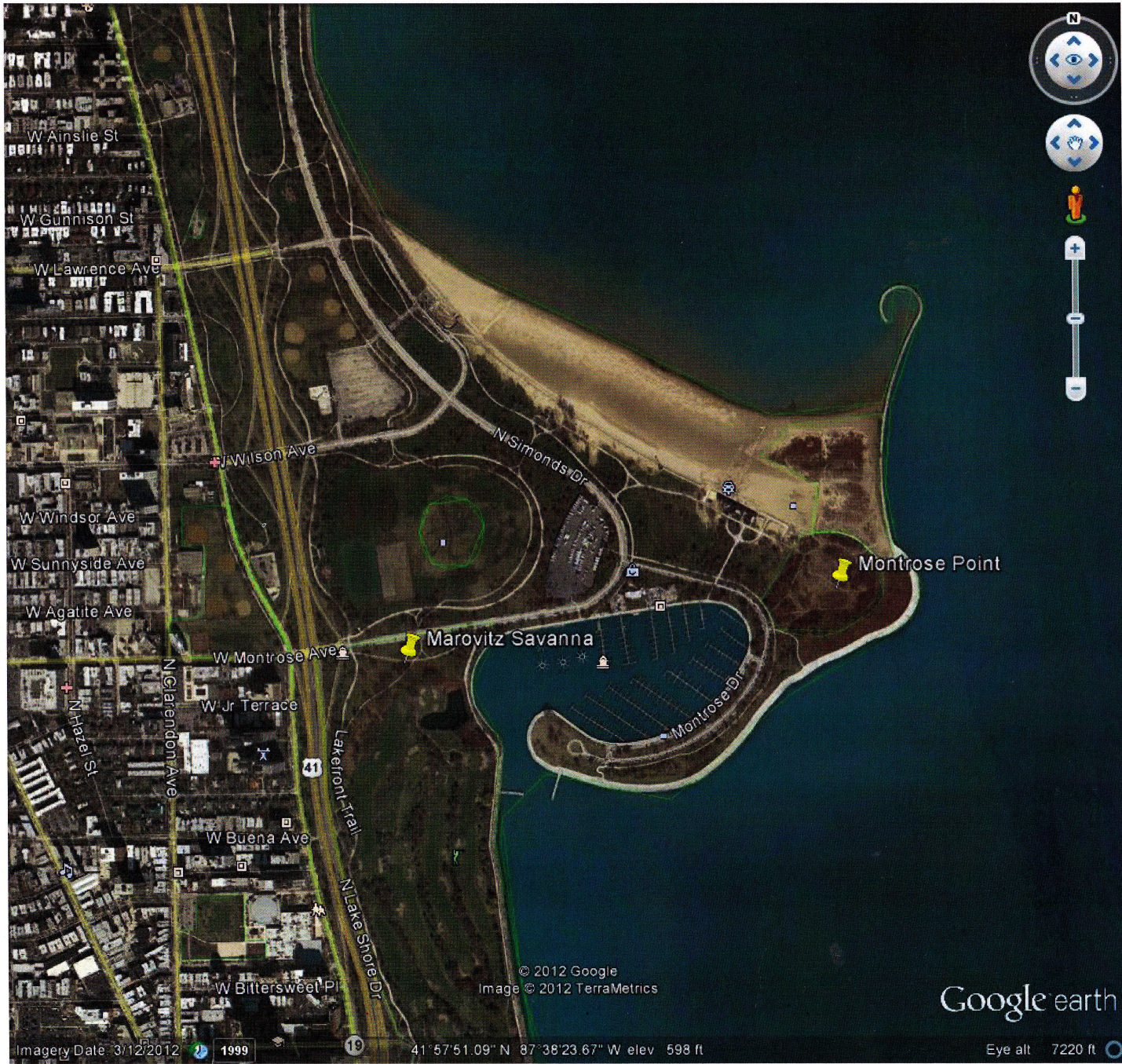


Marovitz Savanna Improvements Perimeter Fencing



Marovitz Savanna Improvements Native Plant Enhancements





Imagery Date 3/12/2012

1999

41°57'51.09" N 87°38'23.67" W elev 598 ft

© 2012 Google
Image © 2012 TerraMetrics

Google earth

Eye alt 7220 ft